

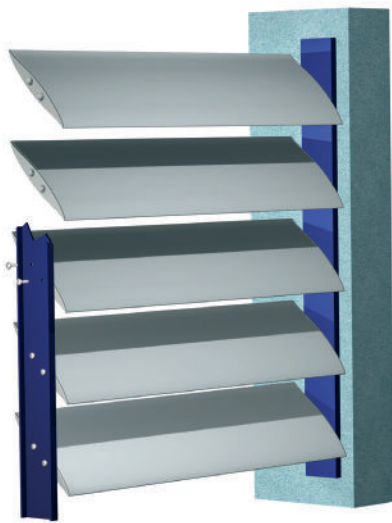


## END FIXED SUN LOUVRES

### FIX BLADES VERTICALLY OR HORIZONTALLY

All Louvretec sun louvres can be end fixed & all have internal screw fixing ports which allows the blades to be end fixed, set at any pitch and any centre.

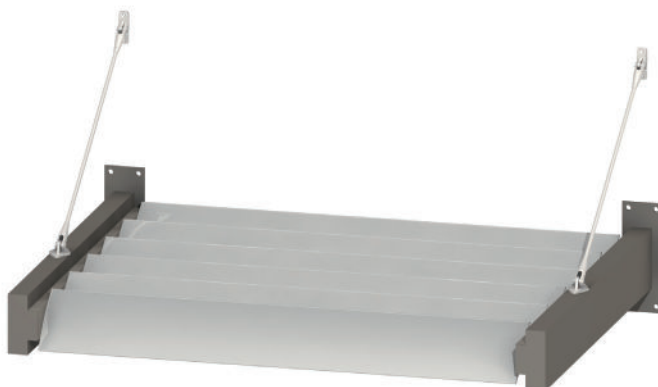
As a rule of thumb blade centres are generally fixed at between 75% - 100% of the blade width.



VERTICAL PANEL END FIXED

### VERTICAL PANELS END FIXED

- All Louvretec sun louvres have internal screw fixing ports. This enables the blades to be;
  - set at any angle or pitch (blade pitch)
  - set at any centre (blade centre)
- As a rule of thumb, blade centres are fixed at between 75% - 100% of their width.  
eg: 180mm Airfoil would have a centre between 135mm - 180mm.
- Blade pitch is an equally important consideration in determining the degree of light, shade, privacy and shelter.



OVERHEAD PANEL END FIXED

### OVERHEAD PANELS END FIXED

- Horizontal or overhead louvres may fit within an existing opening or as illustrated may require a separate structural sub-frame.
- Sub-frames are typically aluminium or steel and usually require specific engineering details.
- Louvretec specialises in the supply and installation of aluminium structural sub-frames.
- Please contact Louvretec for further details.