



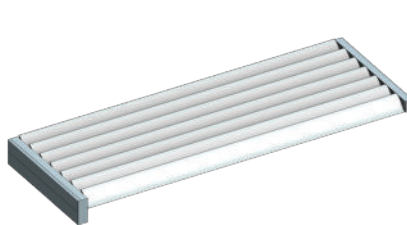
DRIVE SYSTEMS

SPIRAL PIVOT SYSTEM - THREE VARIANTS

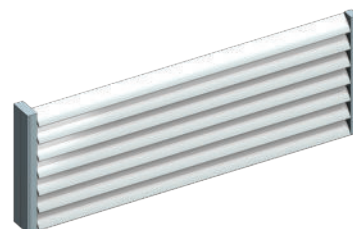
Hidden away the Spiral Pivot system is the very heart of Louvretec's operating system. Linked to a custom made gear box and driven by Somfy - the world's leading tubular motor manufacturer.

1. DOWNUNDER OR OUTBACK SPIRAL PIVOT

Designed specifically for Louvretec's new generation louvres, not only is the pivot operating system hidden from sight, so too is the motor and gearbox providing the cleanest look imaginable.



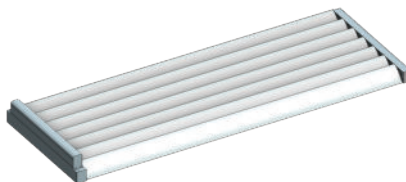
OVERHEAD PANEL - DOWNUNDER



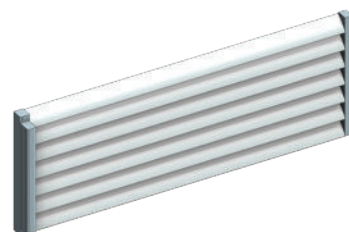
VERTICAL PANEL - DOWNUNDER/OUTBACK

2. MOTOR OVER, FRONT OR BACK SPIRAL PIVOT

This tried and true system has been well proven over many years and offers a wide range of installation options.



OVERHEAD PANEL - MOTOR OVER

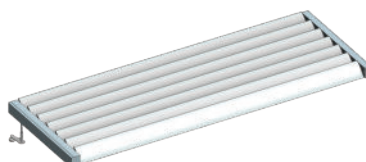


VERTICAL PANEL - MOTOR FRONT

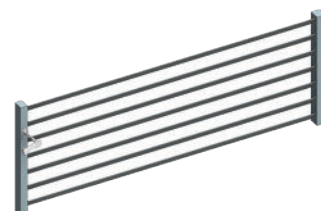
3. HAND OPERATED SPIRAL PIVOT

Using a custom engineered gearbox with a stainless steel crank handle all Louvretec sun louvres are available as hand operable in lieu of motorised.

The louvres can be operated with ease with the handle being detachable for storage when not in use.



OVERHEAD PANEL - HAND OPERABLE



VERTICAL PANEL - HAND OPERABLE