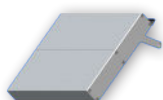
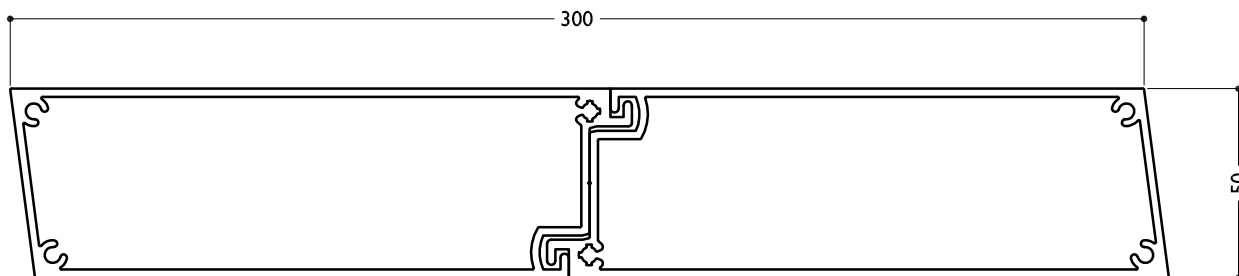


## SUN LOUVRES - RECTANGULAR SPECIFICATIONS



### TECHNICAL DETAILS RL 300 MITRE LOUVRE



scale 1:2

BLADE SPECIFICATIONS			
Blade cover - opening system	307 mm	Weight per lineal metre	5.45 kgm
Weight per square metre - opening system	18.5 sqm	Actual blade width	300 mm
Blade Centres - opening system	307 mm		

SPANS AT A GLANCE NB Refer Engineering Section. Climate, terrain, shielding, location, type of structure contribute to determine spans.

WIND ZONE	INSIDE	LOW	MEDIUM	HIGH	VERY HIGH	EXTRA HIGH
Factored wind speed at building		32m/s 115km/hr	37m/s 133km/hr	44m/s 158km/hr	50m/s 179km/hr	55m/s 198km/hr
Ultimate limit state loads (kPa)		+0.92 & -1.15	+1.23 & -1.53	+1.74 & -2.17	+2.24 & -2.80	+2.71 & -3.39
Adjustable and Fixed Vertical and Horizontal	5800	5800	5800	5150	4500	4050

## INSTALLATION OPTIONS



### MAXI DRIVE SYSTEM: CALCULATE OPTIMUM FRAME OPENING SIZES

Width: Check engineering limits

Height: Calculation example showing 10 blades

9 blades x 307	2763
1 blade at 300	300
10 blades	=3063



### END FIXED

Louvres at any pitch  
Louvres at any centre



### BRACKET FIXED

Louvres at any pitch  
Louvres at any centre