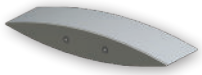
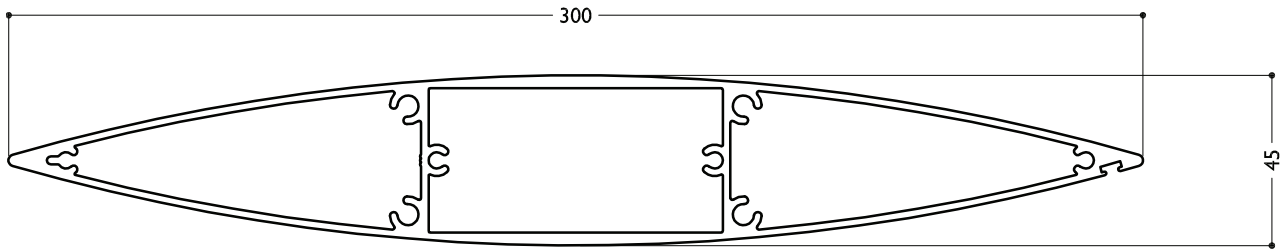


SUN LOUVRES - AIRFOIL SPECIFICATIONS



TECHNICAL DETAILS 300MM MAXI LOUVRE



scale: 1:2

BLADE SPECIFICATIONS			
Blade cover - opening system	288 mm	Weight per lineal metre	5.66 kgm
Weight per square metre - opening system	19.64 kg/sqm	Actual blade width	300 mm
Blade centres - opening system	288 mm		

SPANS AT A GLANCE NB Refer Engineering Section. Climate, terrain, shielding, location, type of structure contribute to determine spans.

WIND ZONE	INSIDE	LOW	MEDIUM	HIGH	VERY HIGH	EXTRA HIGH
Factored wind speed at building	Self wt	32 m/s 115 km/hr	37 m/s 133 km/hr	44 m/s 158 km/hr	50 m/s 179 km/hr	55 m/s 198 km/hr
Ultimate limit state loads (kPa)		+0.92 & -1.15	+1.23 & -1.53	+1.74 & -2.17	+2.24 & -2.80	+2.71 & -3.39
Adjustable and Fixed - horizontal & vertical	4800	4800	4800	4200	3700	3350

INSTALLATION OPTIONS



**END FIXED**

Louvres at any pitch  
Louvres at any centre



**BRACKET FIXED**

Louvres at any pitch  
Louvres at any centre



**MAXI-DRIVE  
PIVOT SYSTEM**

**CALCULATE OPTIMUM FRAME  
OPENING SIZES**

Width: Check engineering limits  
Height: Calculation example showing 17 blades

STEP 1

16 blades x 288	4608
1 blade at 300	300
17 blades	=4908

STEP 2

Blade cover	4908
+ top and bottom closing angles allow for	
5mm + 5mm	10
Total exact opening height	=4918*

\*This is inside measure - not outer frame size.