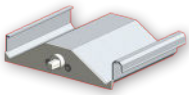
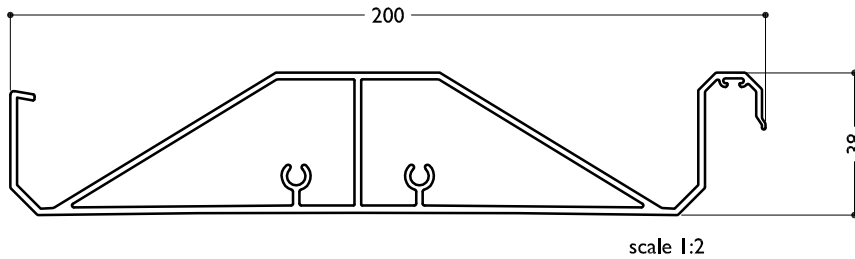


OPENING ROOFS SPECIFICATIONS



TECHNICAL DETAILS 200 SUPER ROOF LITE



BLADE SPECIFICATIONS			
Blade cover - opening system	188 mm	Weight per lineal metre - opening system	2.483 kg/lm
Weight per square metre - opening system	13.20 kg/sqm	Actual blade width	200 mm
Blade centres - opening system	188 mm		

SPANS AT A GLANCE NB: Refer Engineering Section. Climate, terrain, shielding, location, type of structure contribute to determine spans.

WIND ZONE	INSIDE	LOW	MEDIUM	HIGH	VERY HIGH	EXTRA HIGH
Factored wind speed at building	Self wt	32m/s 115 km/hr	37m/s 133 km/hr	44m/s 158 km/hr	50m/s 179 km/hr	55m/s 198 km/hr
Ultimate limit state loads (kPa)		+0.92 & -1.15	+1.23 & -1.53	+1.74 & -2.17	+2.24 & -2.80	+2.71 & -3.39
200 Super Roof Lite	4900	4500	4500	3950	3500	3200

INSTALLATION OPTIONS



**CALCULATE OPTIMUM FRAME OPENING SIZES FOR SPIRAL PIVOT**

Span: Check engineering span limits  
Pivot: Calculation example showing 17 blades

STEP 1  
 16 blades x 188 Crs            3008  
 1 blade at 200 (blade size)+   200  
 17 blades                            =3208

STEP 2  
 Blade cover                        3208  
 +2/22mm clearance @ ends =   44  
 Total exact pivot length        =3252  
 Extra width 185mm gutter provides cover if clearance  
 increases over 22mm at ends.  
 Blade direction either right hand up or left hand up.

**CHOOSE DIRECTION OF BLADE PIVOT**

