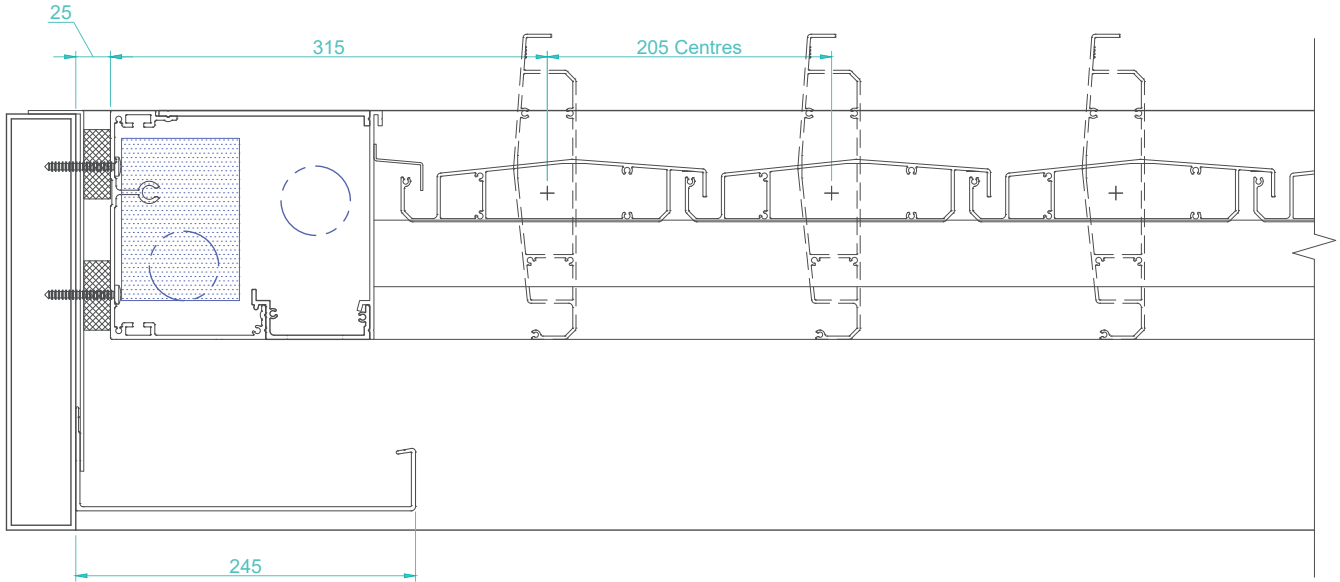


**TYPICAL DETAIL : CROSS SECTIONS 220/45 SUPER RETRACT WITHIN 300x50 ALUMINIUM STRUCTURAL FRAME**

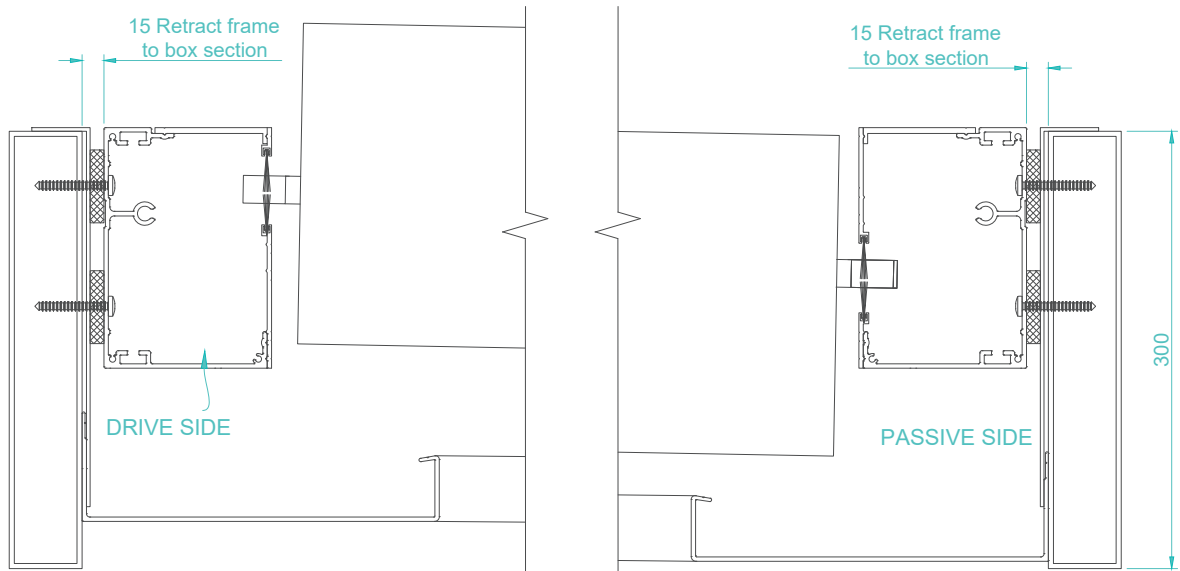


**CROSS SECTION THROUGH BLADES**

THIS DIMENSION IS CRITICAL AND IS DETERMINED BY THE NUMBER OF BLADES USED AND THE CONFIGURATION OF THE RETRACT ROOF.

**FOR RETRACT BLADE CALCULATION SHEETS**

REFER TO PAGES 3.21 - 3.34 (DEPENDENT ON FRAME CHOICE) IN THIS SECTION



**CROSS SECTION RUNNING WITH BLADES**

THIS DIMENSION IS FLEXIBLE AND LIMITED ONLY BY SPANNING CAPABILITY OF RETRACT BLADE.

**FOR RETRACT BLADE SPAN CHART**

REFER TO PAGE 3.12 IN THIS SECTION