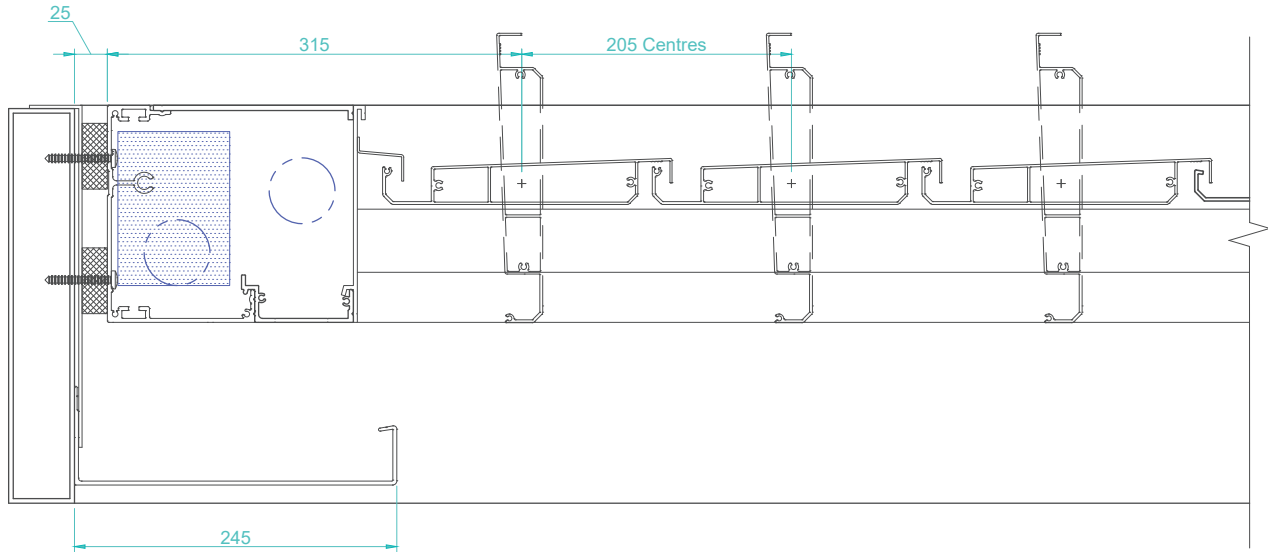


TYPICAL DETAIL : MOTORISED 220/35 SLIMLINE RETRACT

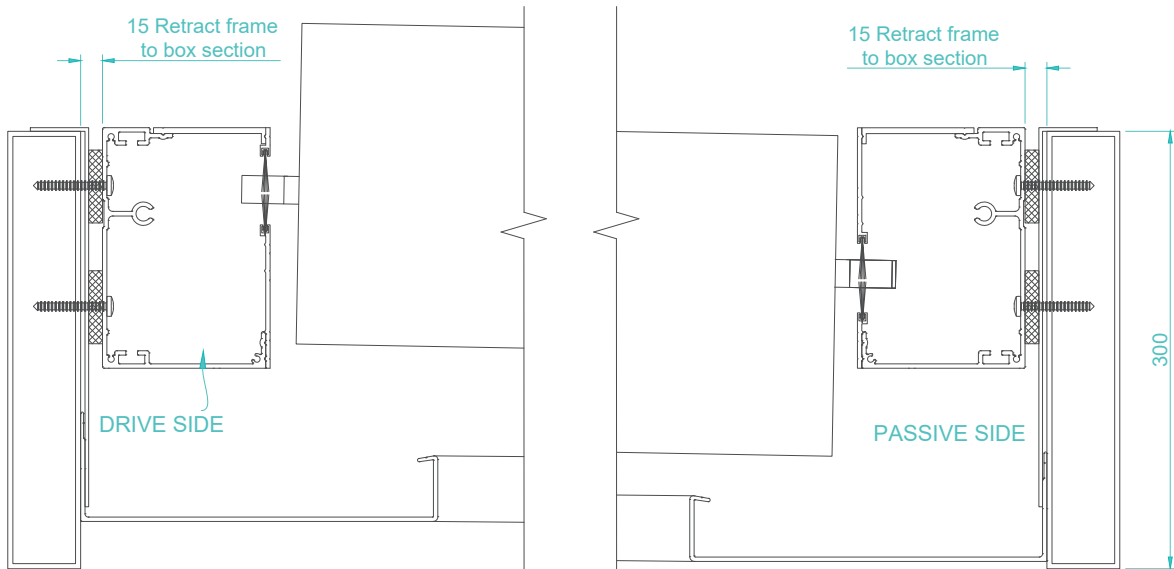


CROSS SECTION THROUGH BLADES

THIS DIMENSION IS CRITICAL AND IS DETERMINED BY THE NUMBER OF BLADES USED AND THE CONFIGURATION OF THE RETRACT ROOF

FOR RETRACT BLADE CALCULATION SHEETS

REFER TO PAGES 3.21 - 3.34 (DEPENDING ON FRAME CHOICE) IN THIS SECTION



CROSS SECTION RUNNING WITH BLADES

THIS DIMENSION IS FLEXIBLE AND LIMITED ONLY BY SPANNING CAPABILITY OF RETRACT BLADE

FOR RETRACT BLADE SPAN CHART

REFER TO PAGES 3.12 IN THIS SECTION